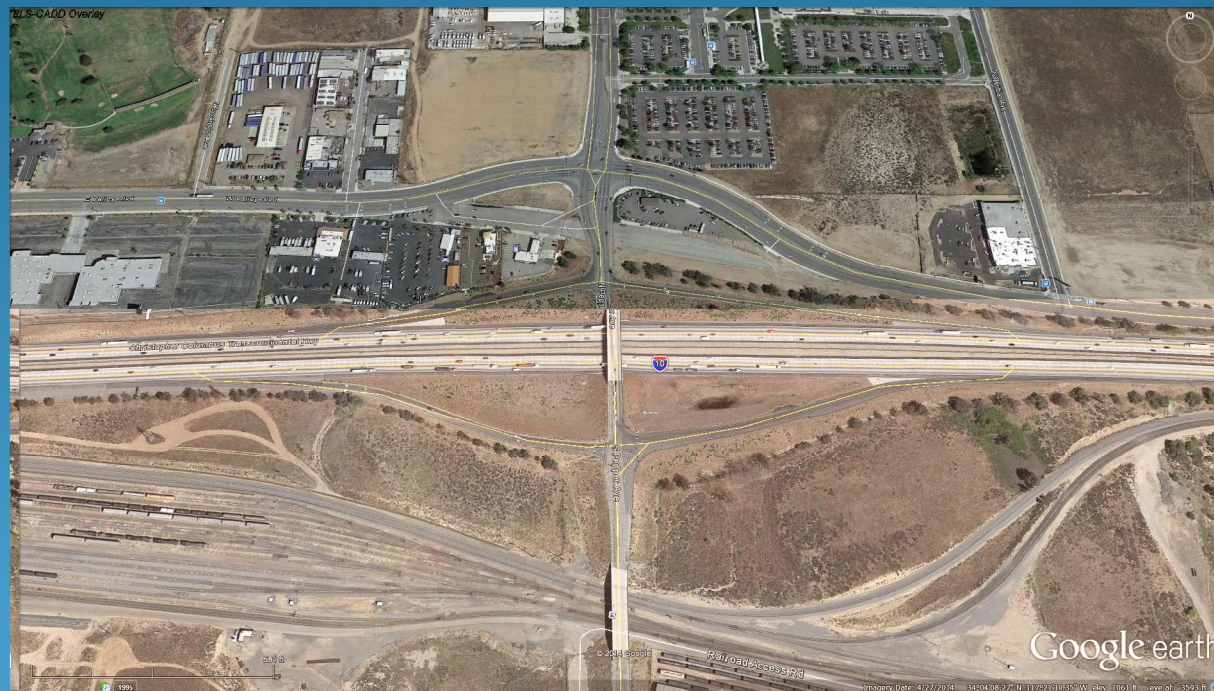
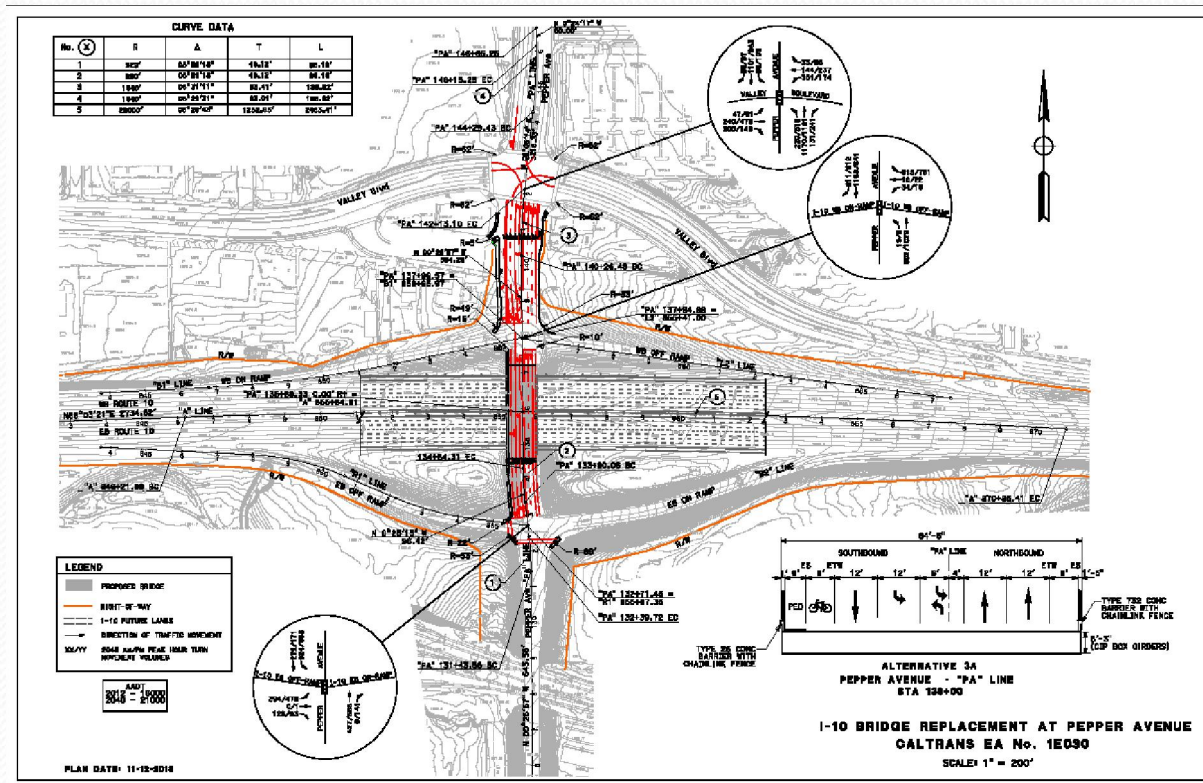


# I-10/Pepper Avenue Interchange Project



## Scope of the Project Includes:

- Replace existing bridge with new structure.
- The project will provide two (2) northbound thru traffic, two (2) southbound exclusive left turn pocket, Class II bikelane and sidewalk (west side of bridge).
- Bridge aesthetics - consistent with I-10 freeway master plan with City of Colton name and logo.







## Project Funding and Schedule

### Funding:

\$ 7,039,000 – Federal Funding

\$ 369,600 – Sanbag

\$ 246,400 – City

**\$ 7,655,000 – Total Project Funding**

### Project Schedule:

Completion of Plan and Specifications – 12/2014

Contract Advertisement – 5/2015

Construction :   Begin – 9/2015

                          End – 1/2017

32D'-0"

31B'-6"

LIMITS OF PAYMENT FOR CONCRETE BARRIER [TYPE 28 Mod] AND CONCRETE BARRIER [TYPE 73B Mod]

LIMITS OF PAYMENT FOR CHAIN LINK RAILING [Mod]

4 EQUAL Spacing = 28'-6"

15 EQUAL Spacing (POST SPACING)

25'-4 1/2"

15 EQUAL Spacing (POST SPACING)

4 EQUAL Spacing = 28'-6"

9"

9"

20° TYP

20° TYP

9"

9"

DETAIL 3

ELEVATION

1" = 10'

14'-0"

7'-0"

CITY ART PANEL

LINK TYP 3 x 3/4"

1'-0"

8'-0"

8'-1 1/2"

6" EQUAL SPACING

POST ANCHORAGE PER B11-52, TYP, TOT 7

CABLE ANCHORAGE

TS 3 x 2 x 3/4" PER B11-52 ROTATE AT 5° INCREMENTS, TYP, TOT 7

FACE OF ABUTMENT

FACE OF SLOPE

INTER FACE, TYP

REFERENCE GRID 36" x 36" GRID

TOE OF SLOPE

CLASS 1 FINISH

DETAIL 2

96'-0"

100'-0"

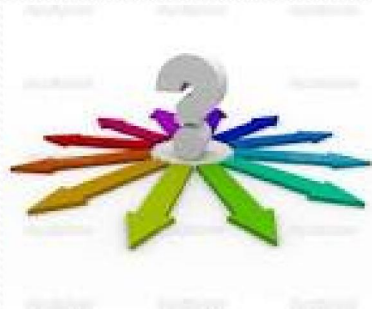
1/4" = 1'-0"

SLOPE PAYING - ARCHITECTURAL TREATMENT

- Colton name and logo on the bridge.
- Fractured rib finished on the concrete slopes under the bridge.
- Bridge will be painted.



# Questions



Thank you